

KERALA STATE ROAD TRANSPORT CORPORATION



Income vs Expenditure 2021-22 (without carrying forward dues).

(Rs. Cr)	April	May	June	July	Aug	Sep
Collection+ NFR	93.04	8.66	21.53	59.94	76.82	81.05
Govt. Assistance	201.49	103.56	171	100	80	80
Total inflow	294.53	112.22	192.53	159.94	156.82	161.05
Cash Out flow	174.74	98.55	110.92	161.12	152.33	173.89
Balance	119.79	13.67	81.61	-1.18	4.49	-12.84
Committed expenses	290.93	113.48	195.84	175.38	207.63	237.96
Excess/ Deferred expenses	171.14	-99.81	-114.23	-176.56	-203.14	-250.8

Monthly Cash out flow

Particulars	April	May	June	July	August	September
Salary	83.64	82	80.81	81.54	81.97	86.98
Pensionary Benefits	12.74	0.43	0.74	20.68	3.13	12.17
Fuel	56.66	2.55	17.4	43.7	52.64	56.72
Spare Parts	9.32	3.24	3.21	1.14	4.3	3.69
MACT	1.53	0.41	0.07	1.72	0.05	1.22
PF	3	4.1	3	3.1	3.57	3
Mis. Expenses (Electricity, Telephone, Water charges. etc.)	2.1	0.61	0.2	3.68	1.36	2.21
TDS & GST	0.89	0.11	0.29	0.26	0.01	0.56
Dept recoveries & remittance	4.86	5.1	5.2	5.3	5.3	5.3
Retail Fuel Outlet						2.04
Total	174.74	98.55	110.92	161.12	152.33	173.89

Fuel and Spare parts vs Revenue

Rs Cr	Apr	May	June	July	Aug	Sep
Collection+ NFR	93.04	8.66	21.53	59.94	76.82	81.05
Fuel	56.66	2.55	17.4	43.7	52.64	56.72
Spare Parts	9.32	3.24	3.21	1.14	4.3	3.69
Total Fuel + spares	65.98	5.79	20.61	44.84	56.94	60.41
% expenses	71%	67%	96%	75%	74%	75%
Balance	27.06	2.87	0.92	15.1	19.88	20.64

Plan scheme
2020-21 –
Rs.99. Cr
(last year)

Particulars	Nos	Rs. Cr	Supplier	Status
Sleepers Buses	8		Volvo	Supply from Nov 2021
Semi sleeper Buses	20		Leyland	Supply from Dec 2021
Air suspension Non-AC buses	72		Leyland	Supply from Dec 2021
Electronic Ticketing machines	5500		Micfro fx	Supply started
VLTD (GPS on buses)	5000		VST solutions	Suply and installation started
Modernisation of workshops		31.93	HLL	Work in progress for Rs.39 Cr
Operations/Office Computerisation		18.91		In progress – implementation starts by January 21

**KIIFB Bus
Projects
(Rs.359 Cr)**

PARTICULARS	NOS	RS. CR	STATUS
CNG Buses	310	201.50	2 Bidders – Technical evaluation – finalization by Nov – Supply from Feb 22
Electric Buses	50	57.50	5 bidders- technical evaluation - finalization by Nov – Supply from Feb 22
Conversion of diesel into LNG	400	100	2 Bidders – Proto type by May 22

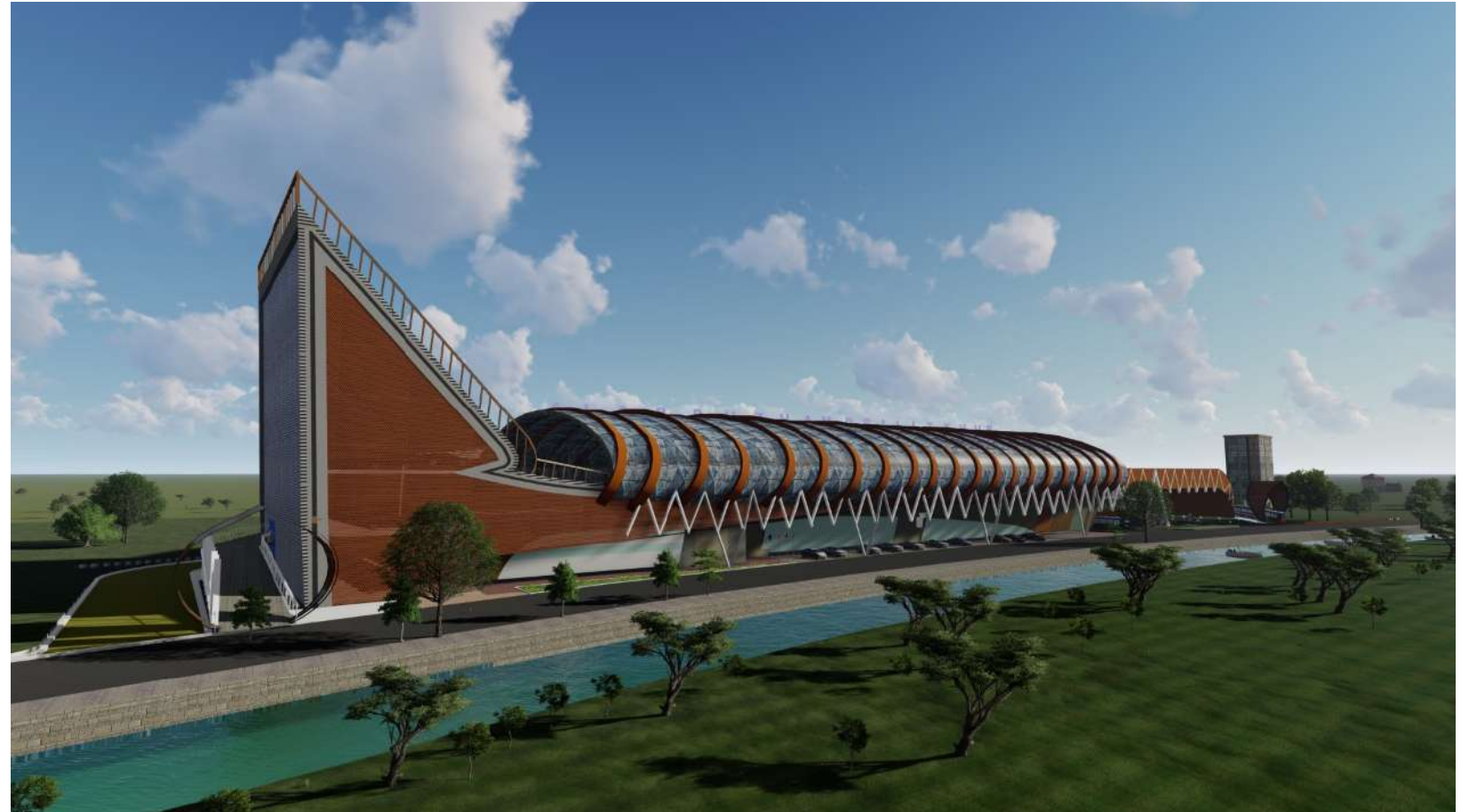
KIIFB HQ –
Vikas Bhavan
Depot

- KIIFB to construct modern Vikas Bhavan depot
- KSRTC to get 1 lakh sq ft space for bus depot
- Project yet to start – KIIFB to take final decision



KIIFB –
Alappuzha
Mobility Hub

- SPV INKEL
- Bus depot to be shifted to Kalvoor in NH
- Very slow progress





**Budget -Major
announcements
February 21 &
June 21**

Budget Feb
& June 2021

Schemes	Status
Puthukad Mobility Hub	KIIFB to fully fund – low commercial potential – This interchange point can save Crores of Rs.
Munnar Tourism project	To tie up with KTDC - Kerala Tourism Infrastructure Ltd entrusted to study
Ernakulam Commercial project	Rs. 10 Cr to be sanctioned under smart city Mission – Kochi KIIFB to provide VGF for commercial projects
Kayamkulam depot/complex	KIIFB to fund for Viability Gap
Kollam depot/complex	KIIFB to fund for Viability Gap
3000 Buses to CNG	Tender finalised – work order issued for a prototype of 5 buses for Rs. 6.27 lakhs/bus Tata/ley land yet to submit new engines for replacement To take 3 to 4 years for completion

New Initiatives



Yathra Fuels – Retail Fuel Outlets

- Proposed at 75 locations
- 8 retail outlets already started from the month of September 2021
- 10 more outlets planned for inauguration in the next 100 days
- Currently 67 employees re-deployed
- Dealer commission earned Rs 15.25 Lakhs (15.09.2021-20.10.2021)



Shop on wheels

- Started – 4 Nos
- Rent received up to 20.10.2021
- Rs 28,70,000/- as rent
- 40 nos to be started (19 handed over)

Lube shop

- Started at Ernakulam jetty
- Received commission of Rs 70,000
(For July, August, September 2021)
- Work of 2nd outlet under progress at Aluva



Munnar Tourism



1. Sight seeing service

- The bus will reach the main tourist spots in Munnar
- The sightseeing ride will cost Rs. 250 per head

2. Stay at sleeper bus

- Each bed will cost Rs 100

3. Tent stay

- The cost for one person for a night in tent is Rs 200

Tourism special services

- Irinjalakkuda - Malakkapara
- Chalakkudy – Malakkapara
- Malappuram - Munnar



Samudra

- A service dedicated to the fisherwomen
- Begun the service of three low floor buses titled 'Samudra'
- In collaboration with Department of Fisheries.
- Amount receivable Rs 67.50 Lakh per year





Travel Card

- pre paid rechargeable cards
- Up to Rs. 2000
- concession tickets
- One day cards



BOND (Bus on Demand)

- Total Number of Services – 51
- Monthly average collection :Rs 58.57 Lakhs



Bus Rentals

Bus on rent for various occasions like marriage etc and to Organizations like VSSC for using as staff bus.



Total revenue – Rs 61.40 Lakhs (November 2020 – October 2021)

City Circular

- in Thiruvananthapuram
- later in all corporations

Gramavandi

- To ensure the transport facilities to villages and backward areas
- To be introduced in collaboration with LSGDs and public
- To commence operation by April 2021

School - BOND

- To ensure safe travel to students in this pandemic situation
- Buses will be provided on request by Schools



Marketing Division/Budget Tourism

- Marketing division established
- Redeployed 20 employees from the operation wing
- Selected based on educational qualifications of Graduation/ Post Graduation/ Professional degrees
- Aim to maximize non-fare revenue
- Started working in the month of July 2021
- Business achieved so far – Rs 3.02 Cr

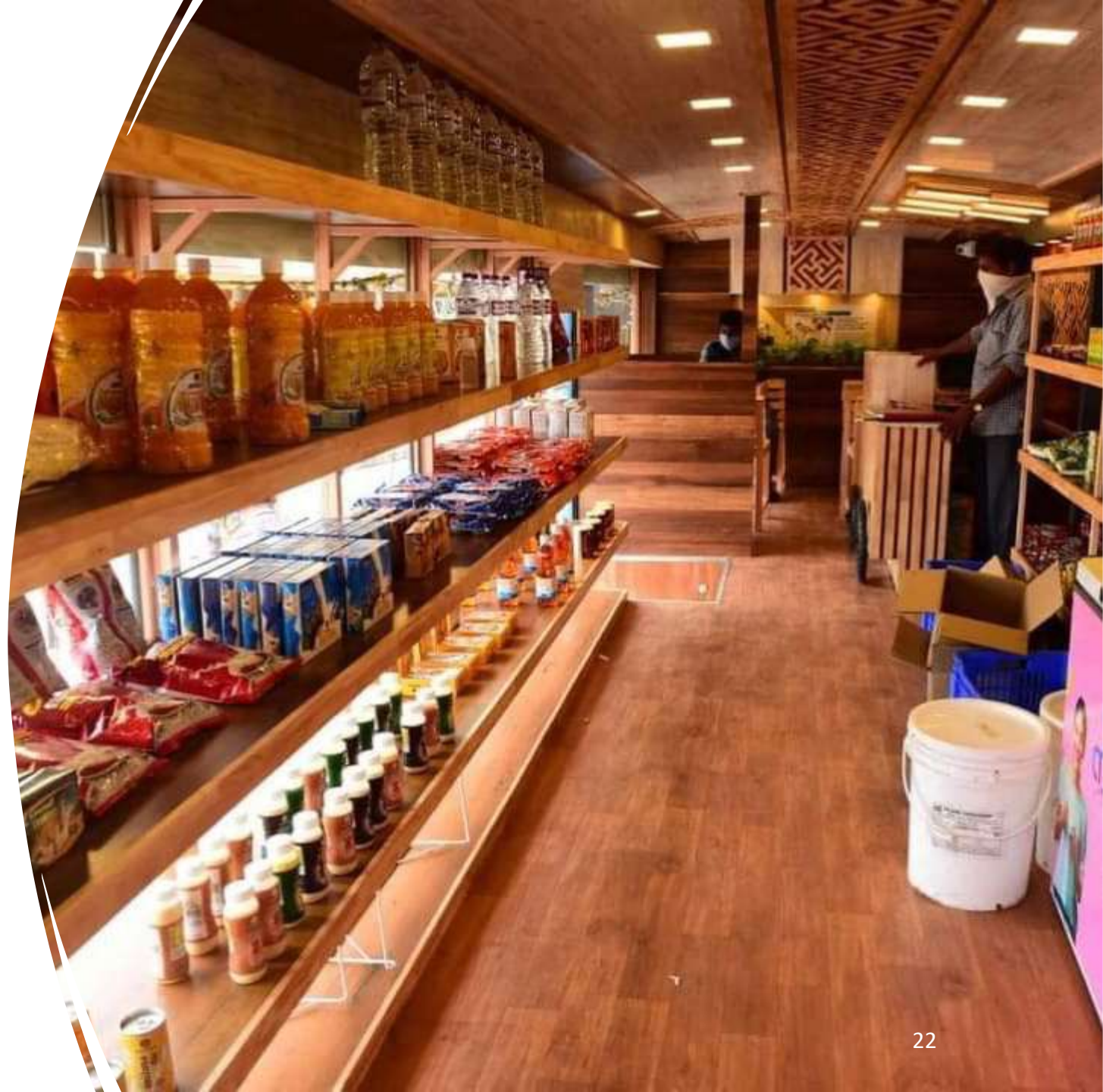


20

Organization Restructure

Sl No	Department / wing	Current status	Proposed	Location
1	Work shops	At all depots	20 Nos	At major locations
2	Administrative offices	At all depots	14 Nos	District head quarter
3	Finance and Accounts Wing	At all depots	14 Nos	District head quarter

Way forward



Formation of KSRTC-SWIFT

SWIFT will give buses to KSRTC
on lease

Crew (driver cum conductor)
will be taken from open
market

- Government Order issued on 19 February 2021.
- Application filed and name reserved.
- to be incorporated soon
- Four cases filed in the High Court.
 - a) Opinion from AG to revise GO
 - b) Requested Government for GO modification and GO modification under Government consideration
 - c) **Cases posted together for 10th November 2021**

Pension case in Supreme court

Petitioners : Retired empanelled employees

Matter: Treatment of empanel service period for calculation of pension

Status: Hon'ble Supreme Court directed to submit a scheme

Additional financial burden as per proposed scheme submitted to Government: Rs 3 Cr per month

Loan from Consortium of Banks

- Amount of Loan : Rs 3100.70 Cr
- EDI payable : 1.02 Cr
- Unable service the debt with the present level of income
- A moratorium of one year required
- **Meeting of consortium banks to be convened preferably at the level of Hon'ble Chief Minister**

Pay revision and Long Term Agreement

immediate
implementation
inevitable

Pay revision due since
March 2016

Additional monthly financial
burden Rs10- 25 Cr

Frustration among
employees

Conversion of buses to CNG

Quicker alternative needed

Conversion of diesel buses to CNG will take long time

For conversion of 3000 buses 3-4 years required

Alternative options


- New engine and gear box (it is costly option)
- Procurement of 700 CNG buses – KIIFB loan required

Duty pattern
Comparison with
other STU's
-
to be
implemented in
KSRTC

A committee
to be
formed to
study

Day/week	Kerala	Tamilnadu	Karnataka
Daily work hours	8 Hrs	8 hours/day (During festivals 10 hours)	9-12 hrs
Steering hours	7 Hrs	7 – 7.15 hours	7-9 hrs
Double duty	16 Hrs	One duty for 260 Km	Steering hrs : 15 – 18 hrs Spread over 18-20 hrs

Measures to
reduce
expenditure of
salaries



decision
on excess
staff

Lay off

- At least 5000 employees to be laid off

Paid long leave

- Option to be given to go on long leave with 50% salary
- Expect at least 3000 employees to opt

Release of
Rs.225 Cr —

to be released
at least in
installments

Announced in Budget
Feb 21

An amount of Rs.225
crore NPS payment

— yet to be released

Rent due from KTDFC

Transfer
the 4
buildings to
KSRTC

50 % rent to be given to
KSRTC

4 projects done through
KTDFC

Not yet started to pay the
agreed percentage to KSRTC

Pattayams of Land held by KSRTC

To be
decided in
the Council

Sl No	Particulars	Land in Acres
1	Total Land for which Patta/ Land Tax available	399.17.5 24
2	Total Land for which no Patta/Land Tax available	60.89.16 6
3	Land on Lease	18.11.28 0
	Total Land	418.17.9 70



Development
of bus stations
on long term
basis with KIIFB
VGF funding

- Development in line with the Indian Railway Station Development Corporation
- Station development by giving land for 30 years lease
- PPP models can be adopted
- Proposed locations:
 - Kayamkulam
 - Kollam,
 - Ernakulam
 - Thrissur
 - Munnar
 - Kottarakkara
 - Kannur
 - Enchakkal
 - Thevara, Ekm
 - Thrissur



permission
to go ahead



Dry lease of buses for aging fleet



permission
to go
ahead

For replacement of
aged fleets

Reduce CAPEX
burden

245 buses proposed
in the first phase

Bevco outlets

Decision
from Excise
needed

Proposed models

- Deluxe counters – 2000 to 5000 SQFT will be provided with exclusive areas parking and storage spaces
- Premium counters – Area of 5000 sqft or more for outlets similar to the air conditioned stores in the malls
- Model one with provision to give human resources from KSRTC

Thank You

